

FOOD GRADE FLEXIBLE HOSE



Application- Versatile suction and delivery hose. Specifically designed to convey a wide range of chemicals (solvents and corrosive liquids), pharmaceutical, beverage, dairy, alcohol and other alimentary products.

Tube- UHMWPE (Ultra High Molecular Weight Polyethylene)

Cover- Corrugated black or blue EPDM compound. (Abrasion and ozone resistant)

Reinforcement- Multiple textile plies with dual helix wire.

Temperature Range- -40 °C ~ +120 °C

Standard/Approval- FDA 21 CFR 177.1520

Size	ID (mm)	OD (mm)	Bending Radius (mm)	Working Pressure (bar)
0.75"	19.05	31	100	13.8
1"	25.4	38.05	130	13.8
1.5"	38.1	52.5	210	13.8
2"	50.8	66.5	280	13.8
2.5"	63.5	83	370	13.8
3"	76.2	95	440	13.8
4"	101.6	124	600	13.8

FOOD GRADE HOSE CONNECTIONS

Application- Securely attaches the hose to the desired connections.

Size Availability- 0.75" to 4"

Material Availability- Safety Clamp in SS 316, Hose Collar in SS 304, Hose Tail in SS 316L

Connection Availability- Weld End, Ferrule End, SMS Liner End, SMS Male Part End



Hose Collar



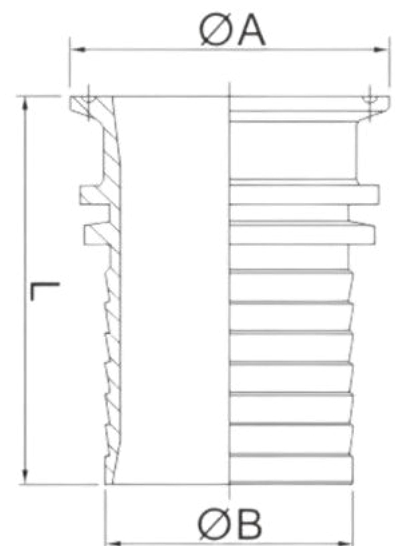
Safety Clamp



Hose Tail

Hose Tail with Ferrule End

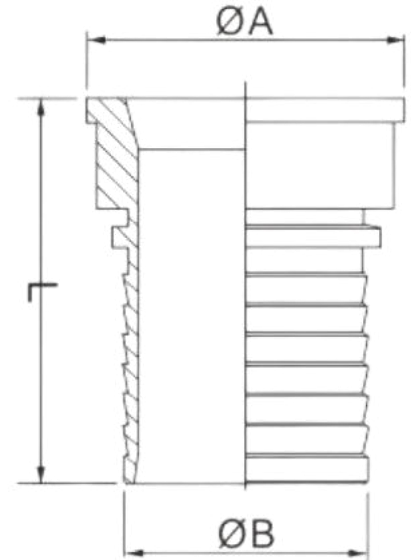
Size	ØA	ØB	L
0.75"	25.2	19	60
1"	50.5	25	63
1.5"	50.5	38	67
2"	64	50	77.5
2.5"	77.5	63	91.5
3"	91	76	105.7
4"	119	102	117.5



FOOD GRADE HOSE CONNECTIONS

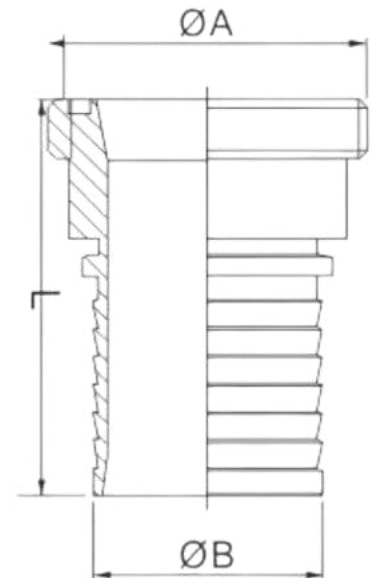
Hose Tail with SMS Liner End

Size	ØA	ØB	L
1"	35.5	25	61.5
1.5"	55	38	63
2"	65	50	79.5
2.5"	80	63	97.5
3"	93	76	113.5
4"	118	102	124.5



Hose Tail with SMS Male Part End

Size	ØA	ØB	L
1"	40 x 1/6	25	69
1.5"	60 x 1/6	38	74
2"	70 x 1/6	50	80.5
2.5"	85 x 1/6	63	106.5
3"	98 x 1/6	76	120.5
4"	124 x 1/4	102	130



FOOD GRADE WATER SPRAY GUN



Application- By depressing the lever, the desired jet strength can be adjusted continuously from a fine spray mist to a concentrated jet. Suited for gentle and effective cleaning in practically any operation.

Body- Brass and stainless steel

Cover- Shock, heat, and cold by alkali-and an acid-resistant rubber jacket

Connection- 0.5" BSPP thread

Pressure- Up to 24 bar

Temperature- Up to 50C

Flow Rate- litres/minute at 5 bar