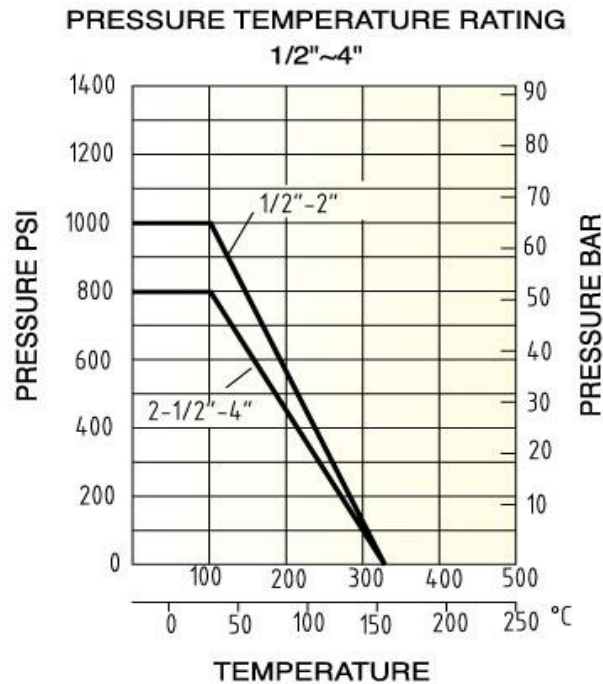


Sanitary Three Piece Body Ball Valve



Method of Operation-

Turning the handle turns the valve ball either parallel or perpendicular to the flow to control or shut off flow. Can be mounted to most commercial actuators due to standard.

Pros and Cons-

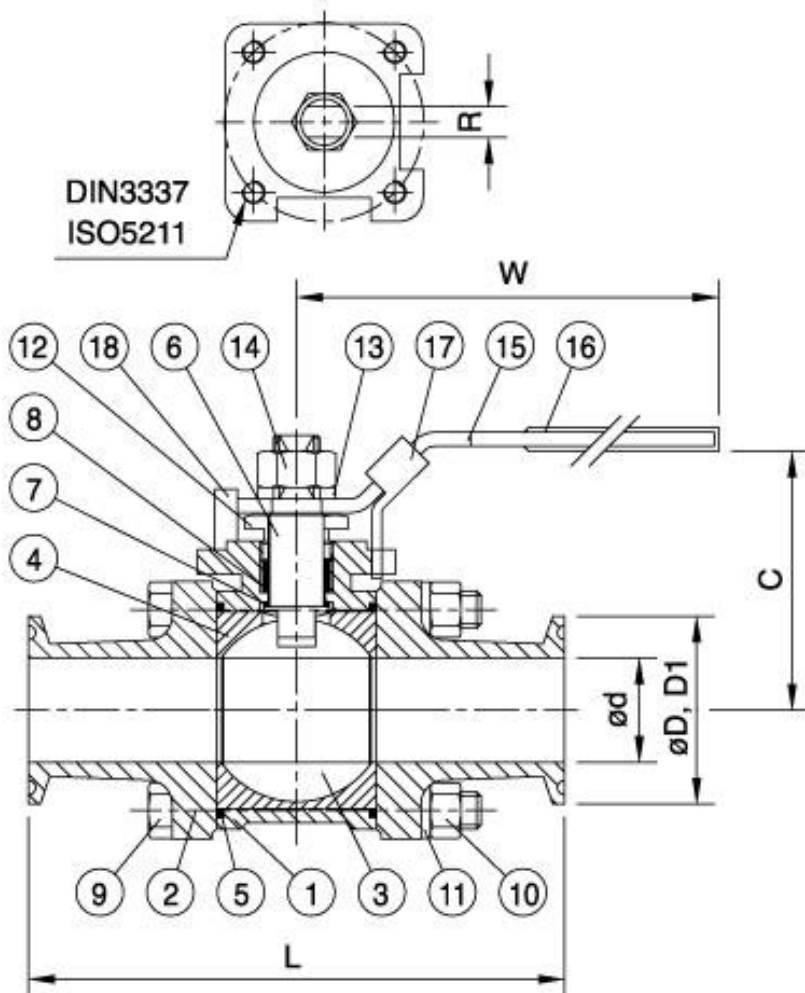
- Highest pressure Sanitary Valve
- Can achieve perfect shut off even after years of disuse
- Can be mounted to most commercial actuators
- When valve is open, no obstruction in valve means no drop in flow pressure
- Hard to clean by CIP systems, have to dismantled
- More expensive than butterfly valves

Size Availability- 0.5" to 4" (*if you need a different size, call us to request it*)

Material Availability- Body in SS 316L, Gaskets in PTFE

Connection Availability- Weld end, Ferrule End

Pressure to Open Valve- Up to 68 bar, reduces along with size



Component List		
No.	Part Name	Material
1	Body	ASTM-A351-CF8M
2	Cap	ASTM-A351-CF8M
3	Ball	A351-CF8M
4	Seat	PTFE
5	Gasket	PTFE
6	Stem	316
7	Thrust Washer	PTFE
8	Stem Packing	PTFE
9	Bolt	304
10	Hex Nut	304
11	Bolt Washer	304
12	Gland	304
13	Washer	304
14	Nut	304
15	Handle	304
16	Plastic Cover	Plastic
17	Lock Device	304
18	Stop Pin	304

Clamp and Weld End										
Size	DN	ISO5211	C	L	W	ød	øD	øD1	R	L1
0.5"	15	F03	55	89	132	9.5	25.4	12.7	5	32.75
0.75"	20	F03	60	101	131.5	15.9	25.4	19.05	5	36.5
1"	25	F04	69	114	165	22.2	50.4	25.4	6.5	40
1.5"	40	F05	84	140	194.3	35	50.4	38.1	8.5	43.5
2"	50	F05	92	156	194.3	47.6	63.9	50.8	8.5	45.75
2.5"	65	F07	126.8	197	252	60.3	77.5	63.5	12	56
3"	80	F07	136	229	252	73	90.9	76.2	12	64.5
4"	100	F10	158.8	242.7	333	97.4	118.9	101.6	16	60.6